

Distributed by
Raymarine

Any reference to Raytheon or RTN in this manual should be interpreted as Raymarine. The names Raytheon and RTN are owned by the Raytheon Company.

MARKS/MOB

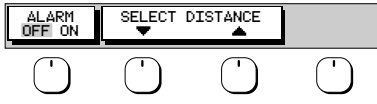
Controls placing waypoints and Man Overboard function.
- Press to access Waypoint soft keys; use soft keys to Place Waypoint at cursor or vessel position. Press **ENTER** to finish.
- Press and hold for 2 seconds to activate or cancel MOB.

ALARMS

Use to set up alarm parameters.
- Press for display alarm list.
- Use Trackpad to select alarm.
- Use up/down soft keys to set alarm limits.
- Press **ENTER** to finish

ALARMS SET UP

ARRIVAL ALARM	0.01nm
OFF TRACK ALARM	ON
ANCHOR ALARM	OFF
COUNTDOWN TIMER	00:10:00
ALARM CLOCK	OFF

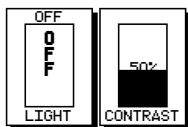


POWER

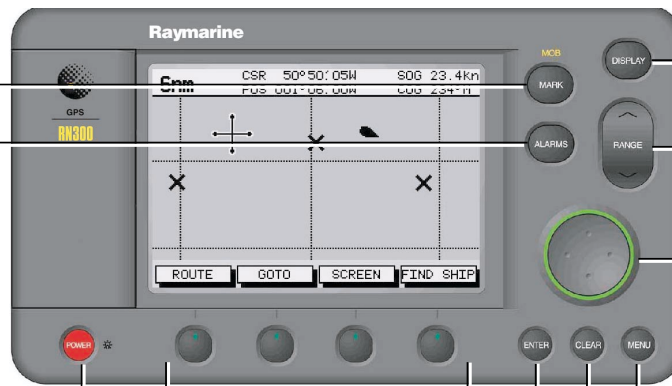
Press and hold to switch on display.
Press for 3 seconds to turn off display.

POWER

Press momentarily to access lighting and contrast.



Select a slider using the soft key or trackpad left/right.
Adjust slider using trackpad up/down.
Press **ENTER** to finish.



DISPLAY

Controls display mode pages.
- Press repeatedly to toggle through display modes.
- Press and hold for 2 seconds for default display.
See over for display modes.
Note: Where multiple pages are available, use associated soft keys to display.

RANGE

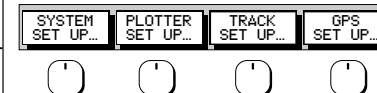
Controls range scale.
Range scale is shown in the Status Bar.
- Press top of key to increase the range scale.
- Press bottom of key to decrease the range scale.
- Press and hold to change the scale rapidly.

TRACKPAD

Controls cursor position on the screen, and also the sliders, setup options and text entry.
Hold the trackpad down to move the cursor rapidly.

MENU

Provides access to setup options.



Press soft key to display required setup menu, then use trackpad to select option and soft key to change setting.
Press **ENTER** to close menu and **CLEAR** to finish.

Soft keys

Press to select option, or to highlight option or slider.
Labels change when you press soft/dedicated key.
Elipses (...) after the text indicate that pressing soft key leads to a further display of soft key options.

ENTER

Confirms selection and (if appropriate) clears current soft key labels. It either performs the selected task, accepts changes, or leads to display of more options.
When cursor text is displayed, cursor takes control of the object.
When arrow-head cursor symbol is displayed, the object under cursor control is dropped.

CLEAR

Cancels operation in progress and returns to the previous display.

Bridge Card - Raynav 300 GPS Plotter

D5832-1

